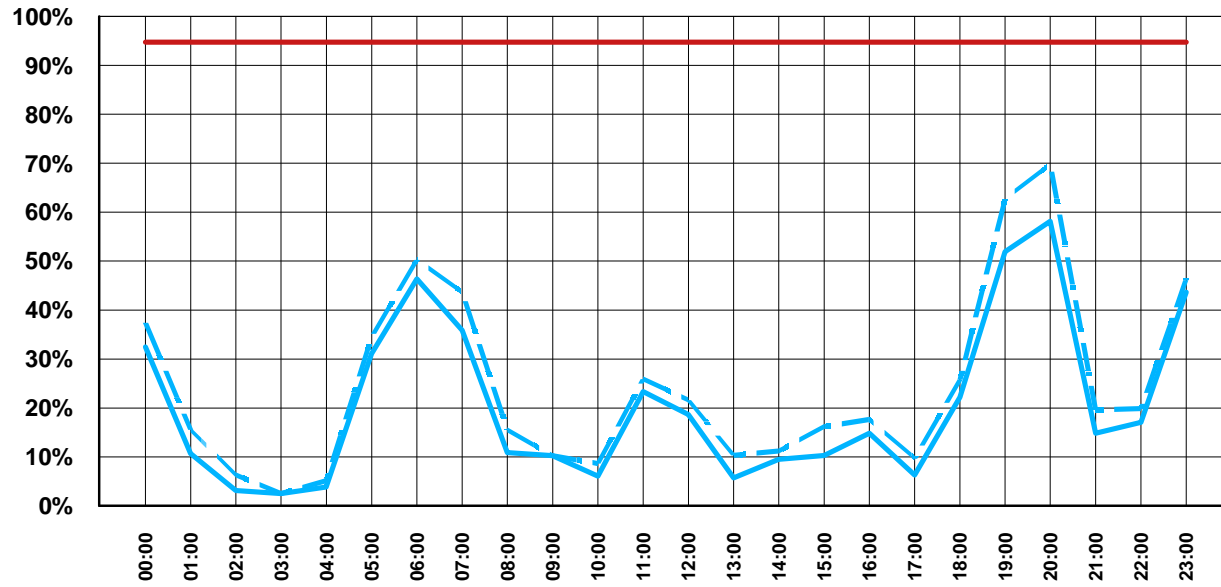


ABU DHABI INTERNATIONAL AIRPORT

Weekly Arrival Seat Capacity Utilisation - Terminal 1 & 3

W09 November 2009 - March 2010 (February Week)



Updated: April 2009

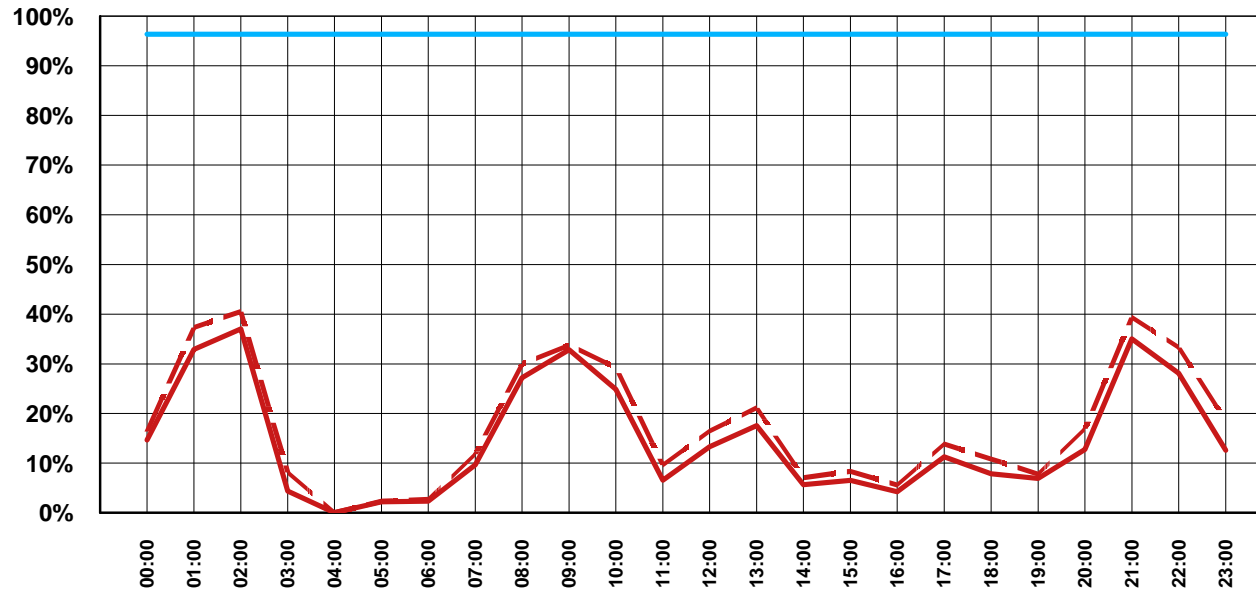
— Avg Week - - - Max Day — Close to Full



ABU DHABI INTERNATIONAL AIRPORT

Weekly Departure Seat Capacity Utilisation - Terminal 1 & 3

W09 November 2009 - March 2010 (February Week)



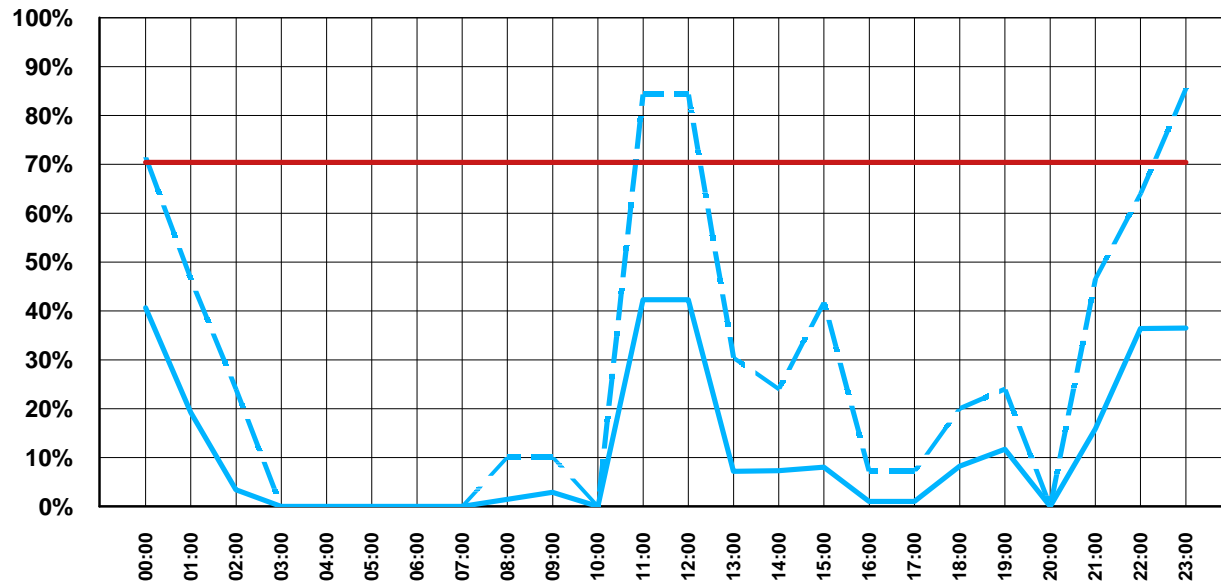
Updated: April 2009

— Avg Week - - - Max Day — Close to Full

ABU DHABI INTERNATIONAL AIRPORT

Weekly Arrival Seat Capacity Utilisation - Terminal 2

W09 November 2009 - March 2010 (February Week)



Updated: April 2009

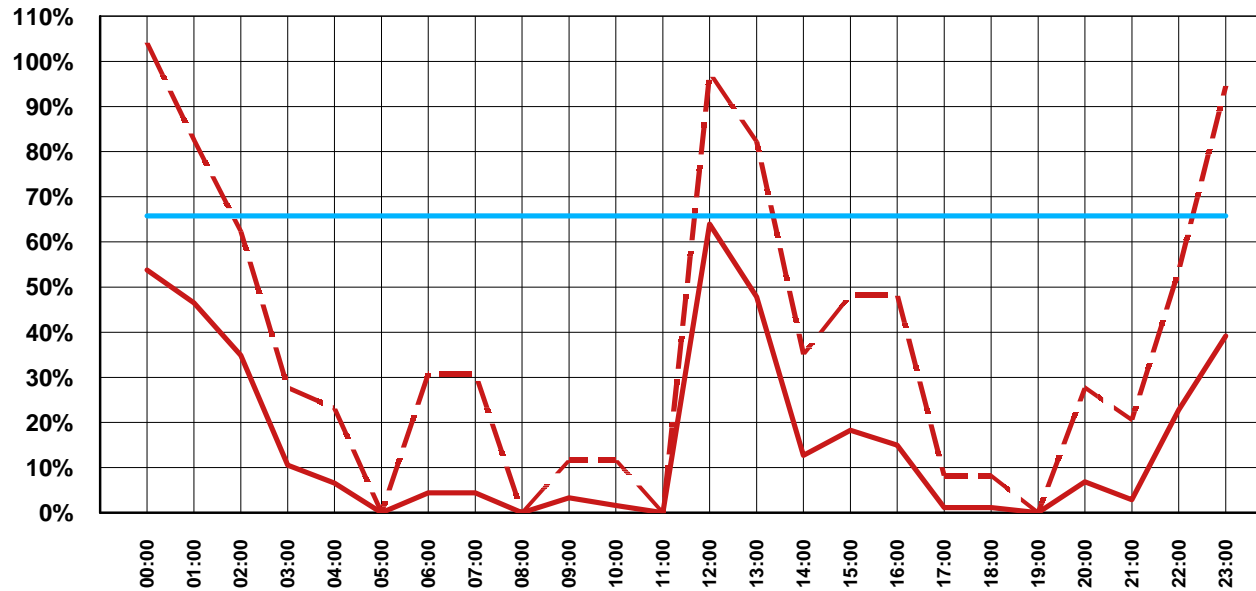
— Avg Week - - - Max Day — Close to Full



ABU DHABI INTERNATIONAL AIRPORT

Weekly Departure Seat Capacity Utilisation - Terminal 2

W09 November 2009 - March 2010 (February Week)



Updated: April 2009

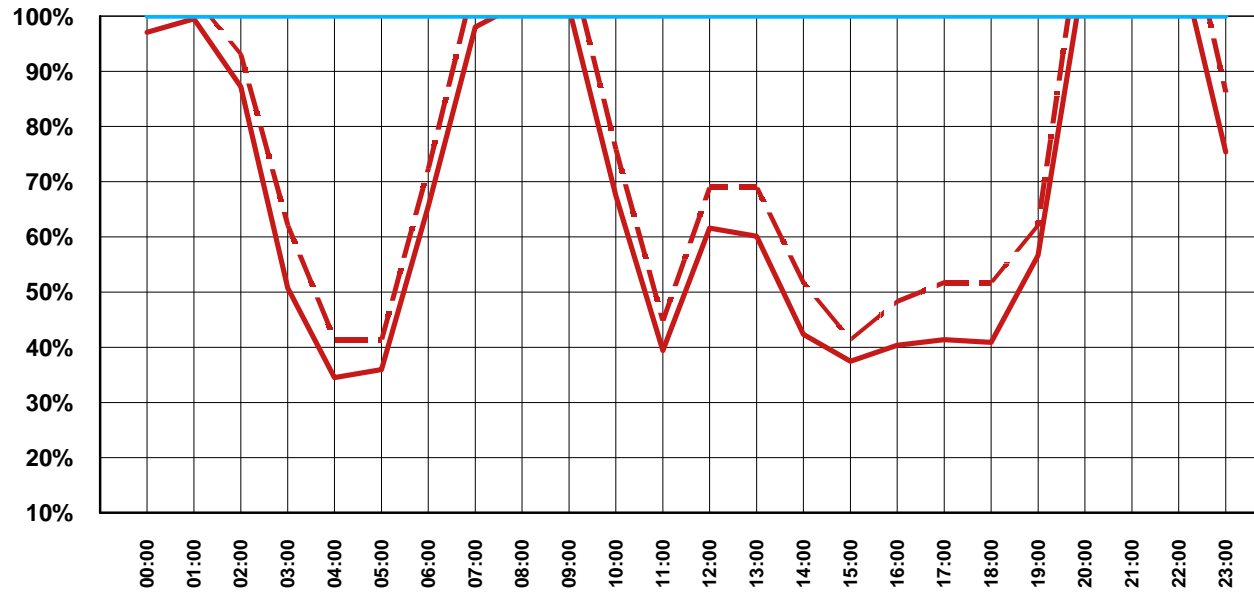
— Avg Week - - - Max Day — Close to Full



ABU DHABI INTERNATIONAL AIRPORT

Weekly Apron Utilisation

W09 November 2009 - March 2010 (February Week)



Updated April 2009

— Avg Week - - - Max Day — Limit

